



# Aquarian 1000Plus

Customer Order Form  
# 9340-1201

Agent Name \_\_\_\_\_  
Customer Name \_\_\_\_\_  
End User Plant Name \_\_\_\_\_  
Plant Location \_\_\_\_\_  
Plant Contact Name \_\_\_\_\_  
Phone # \_\_\_\_\_

Date \_\_\_\_\_  
FST Quote # \_\_\_\_\_  
Agent PO # \_\_\_\_\_  
End User PO # \_\_\_\_\_  
Required Ship Date \_\_\_\_\_

## Aquarian 1000Plus without Column

Qty of Systems \_\_\_\_\_ Voltage:  120V or  240V Water Conductivity \_\_\_\_\_ micromhos

# of Probe Levels: 1 2 3 4  1/2" Type A Probe Connector **OR**  1 1/2" Probe Connector  
(CIRCLE ONE) FOR WELDING IN PRESSURE VESSEL FOR WELDING IN 1 1/2" 3000# TEE

Each system is complete with: High Pressure Probe, Probe Housing Assembly C/W 20" of brass braided conduit, 3' of High Temperature Wire and 1/2" Type A or 1 1/2" Probe Connector per probe, 1-Detection & Verification Electronics in a Nema 4X Enclosure

\$ \_\_\_\_\_ ea

## OR

## Aquarian 1000Plus with Water Column

Qty of Systems \_\_\_\_\_ Voltage:  120V or  240V Water Conductivity \_\_\_\_\_ micromhos

# of Probe Levels: 1 2 3 4  Column:  2000psi  3000psi  Carbon Steel  List Other Material \_\_\_\_\_  
(CIRCLE ONE)

Each system is complete with: 1- Water Column with High Pressure Probe(s) and hydro test report, Probe Housing Assembly(s) C/W 20" of brass braided conduit & 3' of High Temperature Wire per probe, 1-Detection & Verification Electronics in a Nema 4X Enclosure. (NOTE: If ordering optional column mounted junction box, full length probe covers will replace individual probe housings and probes will be pre-wired to Junction Box)

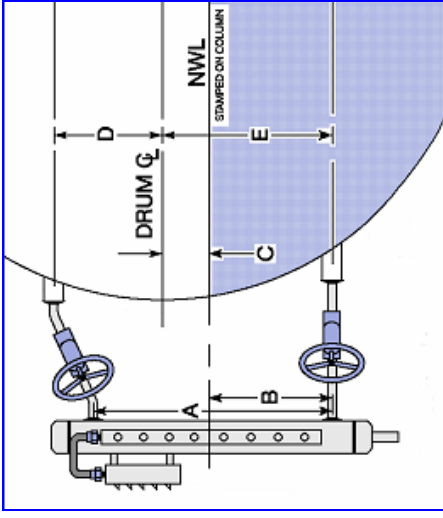
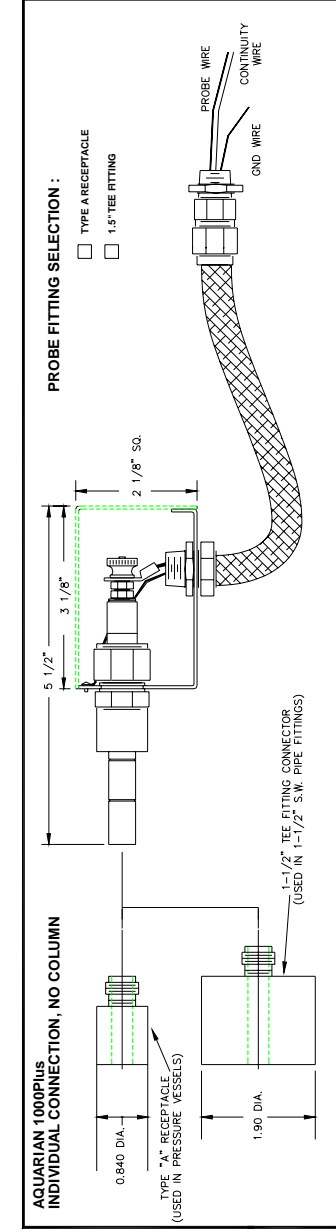
\$ \_\_\_\_\_ ea

Check off the options you are ordering for the above system(s)

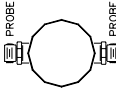
- 9300-2004 Pre-Wired Column Mounted Junction Box & Column Covers \$ \_\_\_\_\_ ea
- 9300-0002 Spare Aquarian High Pressure Probes (Former # 964584-01) \$ \_\_\_\_\_ ea
- 9320-0009 Detection Channel Maintenance Kit \$ \_\_\_\_\_ ea
- Socket Weld Couplings State size \_\_\_\_\_ \$ \_\_\_\_\_ ea
- Flanges State Style,Face,Class on the drawing on reverse side \$ \_\_\_\_\_ ea
- Gauge Connections State size on the drawing on the reverse side \$ \_\_\_\_\_ ea
- 9399-0503 Column material mill certification \$ \_\_\_\_\_ ea
- 6600-0004 1 Conductor High Temperature Wire \$ \_\_\_\_\_ per meter
- 6600-0002 2 Conductor High Temperature Wire \$ \_\_\_\_\_ per meter
- 6600-0003 3 Conductor High Temperature Wire \$ \_\_\_\_\_ per meter
- 9300-1603 High Pressure 1 1/2" Probe Connector Welded in 3000# Carbon Steel Tee \$ \_\_\_\_\_ ea
- 9300-1600 Low Pressure 1 1/2" Probe Connector Welded in 3000# Carbon Steel Tee \$ \_\_\_\_\_ ea
- 9300-1605 High Pressure 1 1/2" Probe Conn. Welded in 3000# F22 Chrome Moly Tee \$ \_\_\_\_\_ ea

4. If ordering Aquarian 1000 Plus with a water column, complete the drawing on the reverse side.

(Note: Above pricing is as per the published list price, please refer to your sales contract for applicable discounts. When all manufacturing information has been received, an order acknowledgement will be faxed with applicable agent discounted prices.)



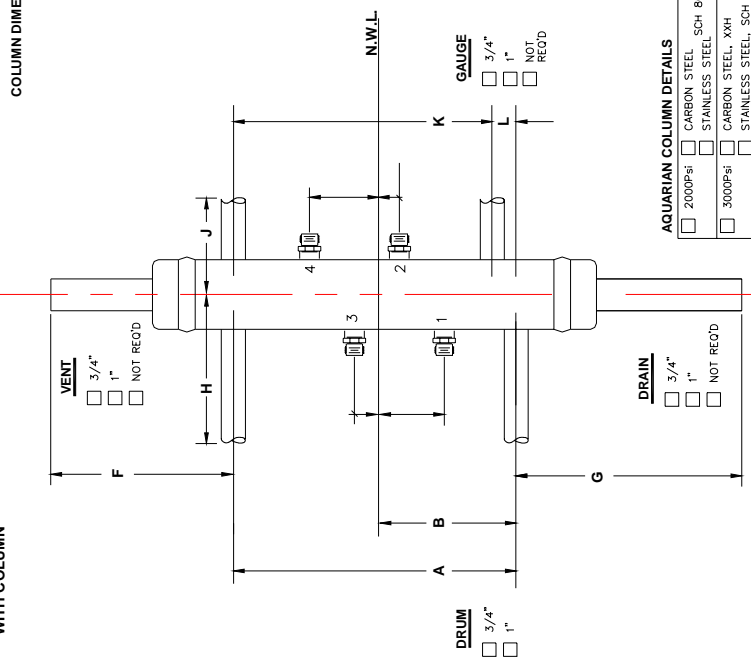
**DRUM & GAUGE COMMON TOP VIEW**



**DRUM & GAUGE COMMON TOP VIEW**



**AQUARIAN 1000Plus WITH COLUMN**



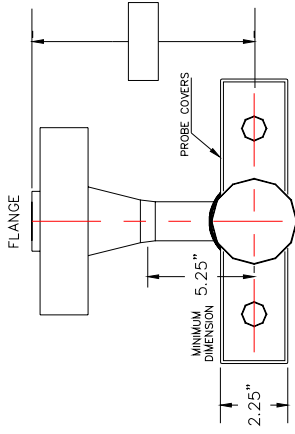
**COLUMN DIMENSIONS :**

A	B	C	D	E	F	G	H	J	K	L
COLUMN DRUM CONNECTION CENTERS	COLUMN WATER CONNECTION TO NWL	NWL TO DRUM CENTER LINE (CL)	DRUM CL TO STEAM CONNECTION	DRUM WATER CONNECTION TO DRUM CL	GENTER OF STEAM CONNECTION TO END OF VENT	GENTER OF WATER CONNECTION TO END OF DRAIN	GENTER OF COLUMN TO END OF DRUM CONNECTION	GENTER OF COLUMN TO END OF GAUGE CONNECTION	COLUMN GAUGE CONNECTION CENTER	GENTER OF WATER TO CENTER OF GAUGE CONNECTION

**CUSTOMER DIMENSIONS :**

DESCRIPTION	CUSTOMER DIMENSIONS
COLUMN DRUM CONNECTION CENTERS	
COLUMN WATER CONNECTION TO NWL	
NWL TO DRUM CENTER LINE (CL)	
DRUM CL TO STEAM CONNECTION	
DRUM WATER CONNECTION TO DRUM CL	
GENTER OF STEAM CONNECTION TO END OF VENT	
GENTER OF WATER CONNECTION TO END OF DRAIN	
GENTER OF COLUMN TO END OF DRUM CONNECTION	
GENTER OF COLUMN TO END OF GAUGE CONNECTION	
COLUMN GAUGE CONNECTION CENTER	
GENTER OF WATER TO CENTER OF GAUGE CONNECTION	

- NOTES:**
- PROBES MUST BE A MINIMUM OF 2" APART ON SAME SIDE OF COLUMN.
  - PROBES MUST BE A MINIMUM OF 0.75" APART ON OPPOSITE SIDES OF COLUMN.
  - UPPERMOST PROBE MUST BE A MINIMUM OF 1" BELOW STEAM DRUM CONNECTION
  - LOWERMOST PROBE MUST BE A MINIMUM OF 1.5" ABOVE WATER DRUM CONNECTION
  - IF COLUMN IS TO BE TOP & BOTTOM CONNECTED INSTEAD OF SIDE CONNECTED, UPPERMOST PROBE MUST BE A MINIMUM OF 1.5" ABOVE STEAM DRUM CONNECTION AND LOWERMOST PROBE MUST BE A MINIMUM OF 4.5" FROM WATER DRUM CONNECTION.
  - STEAM DRUM MUST SLOPE 2% FROM DRUM TO COLUMN CONNECTION (ISOLATION VALVE (GLOBE TYPE) MUST BE INSTALLED WITH STEAM HORIZONTAL).
  - ALL DIMENSIONS ARE IN INCHES.
  - CENTER OF COLUMN & JUNCTION BOX DEPTH = APPROXIMATELY 7".



- OPTIONAL FLANGED DRUM CONNECTIONS**
- SIZE ANSI CLASS \_\_\_\_\_  
 LWRP  LTRF  OTHER \_\_\_\_\_  
 NOT RECD

**CONTRACT INFORMATION**

CUSTOMER: \_\_\_\_\_

LOCATION: \_\_\_\_\_

P.O. No.: \_\_\_\_\_ / SERIAL # \_\_\_\_\_

OPERATING PRESSURE: \_\_\_\_\_ TEMPERATURE: \_\_\_\_\_

DESIGN PRESSURE: \_\_\_\_\_ TEMPERATURE: \_\_\_\_\_

**AQUARIAN COLUMN DETAILS**

2000Psi  CARBON STEEL SCH 80  
 STAINLESS STEEL  
 3000Psi  CARBON STEEL, XXH  
 STAINLESS STEEL, SCH 160

This drawing is the property of Fossil Steam Technologies Inc. and is not to be reproduced, stored in a retrieval system, or transmitted in any form or by any means, electronic, mechanical, photocopying, recording, or by any information storage and retrieval system, without the prior written permission of Fossil Steam Technologies Inc. All drawings are subject to change without notice.

**FOSSIL STEAM TECHNOLOGIES INC.**



**AQUARIAN 1000Plus WATER COLUMN**  
1-4 PROBE LEVELS

DRAWING NO. : 1000P-912605  
REVISION : 0