



# Aquarian 3000Mini

Customer Order Form  
# 9340-1203

Agent Name \_\_\_\_\_  
 Customer Name \_\_\_\_\_  
 End User Plant Name \_\_\_\_\_  
 Plant Location \_\_\_\_\_  
 Plant Contact Name \_\_\_\_\_  
 Phone # \_\_\_\_\_

Date \_\_\_\_\_  
 FST Quote # \_\_\_\_\_  
 Agent PO # \_\_\_\_\_  
 End User PO # \_\_\_\_\_  
 Required Ship Date \_\_\_\_\_

1. Qty of Systems \_\_\_\_\_ Voltage:  120V or  240V Water Conductivity \_\_\_\_\_ micromhos  
 # of Probe Levels: 5 6 7 8 10 12 \_\_\_Other Column:  650psi Carbon Steel  
 (CIRCLE ONE)  2000psi  3000psi  Carbon Steel  
 Other: List material \_\_\_\_\_)

Each system is complete with: 1-Detection & Verification Electronics in a Nema 4X Enclosure, 1-Standard Remote Display and 1-Water Column up to 30" with probes installed and hydro test report.

System price without options.....\$ \_\_\_\_\_ ea

2. Check off the options you are ordering for the above system(s)

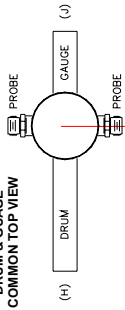
- 9300-2005 Pre-Wired Column Mounted Junction Box \$ \_\_\_\_\_ ea
- 9300-2000 Pre-Wired Column Mounted Junction Box with Continuity Check \$ \_\_\_\_\_ ea
- 9310-9623 5 to 12 Probe 4-20mA Output Module \$ \_\_\_\_\_ ea
- 9310-9634 14 to 24 Probe 4-20mA Output Module \$ \_\_\_\_\_ ea
- 9300-4\*\*\* Door Mounted Local Display \$ \_\_\_\_\_ ea
- 9300-4\*\*\* Additional Remote Display \$ \_\_\_\_\_ ea
- 9300-4\*\*\* Additional Small Remote Display \$ \_\_\_\_\_ ea
- 9300-2321 Nema 4X (IP65) Enclosure for 5 to 10 Probe Remote Display \$ \_\_\_\_\_ ea
- 9300-2322 Nema 4X (IP65) Enclosure for 12 Probe Remote Display \$ \_\_\_\_\_ ea
- 9300-0002 Spare Aquarian High Pressure Probes (Former # 964584-01) \$ \_\_\_\_\_ ea
- 9300-0010 Spare Aquarian Low Pressure Probes (Former # 964584-43 & 52) \$ \_\_\_\_\_ ea
- 9310-9600 Spare Aq 3000Mini Module (Former # 968652-05) \$ \_\_\_\_\_ ea
- 9320-0001 Detection Channel Maintenance Kit \$ \_\_\_\_\_ ea
- 9300-3300 Dual Input Power Source c/w Transfer Relay \$ \_\_\_\_\_ ea
- 9300-3305 Adjustable Timer Relay (for one level) \$ \_\_\_\_\_ ea
- 6010-5101 Trip Bypass Pushbutton (for one level) \$ \_\_\_\_\_ ea
- 9300-2106 Large Enclosure (for systems with dual power &/or time relays) \$ \_\_\_\_\_ ea
- 9300-3315 Interposing Relays (DPDT 150VDC 3A rating) 120V \$ \_\_\_\_\_ ea
- Flanges State Style,Face,Class on the drawing on reverse side \$ \_\_\_\_\_ ea
- Socket Weld Couplings State size \_\_\_\_\_ \$ \_\_\_\_\_ ea
- Gauge Connections State size on the drawing on the reverse side \$ \_\_\_\_\_ ea
- 9399-0503 Column material mill certification \$ \_\_\_\_\_ ea
- 6650-1802 12 Conductor Shielded (10Probe JBox to Cubicle) \$ \_\_\_\_\_ per meter
- 6650-1804 18 Conductor Shielded (12Probe JBox to Cubicle) \$ \_\_\_\_\_ per meter
- 6650-2450 25 Conductor Non-Shielded (10Probe Cubicle to Display) \$ \_\_\_\_\_ per meter
- 6650-2460 30 Conductor Non-Shielded (12Probe Cubicle to Display) \$ \_\_\_\_\_ per meter
- Extra Length Per foot charge for columns over 30" \$ \_\_\_\_\_ per foot

3. Complete drawing on reverse side.

Total Options.....\$ \_\_\_\_\_

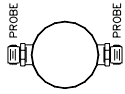
(Note: Above pricing is as per the published list price, please refer to your sales contract for applicable discounts. When all manufacturing information has been received, an order acknowledgement will be faxed with applicable agent discounted prices.)

**DRUM & GAUGE  
COMMON TOP VIEW**



**DRUM & GAUGE  
CUSTOMER REQUIREMENTS :**

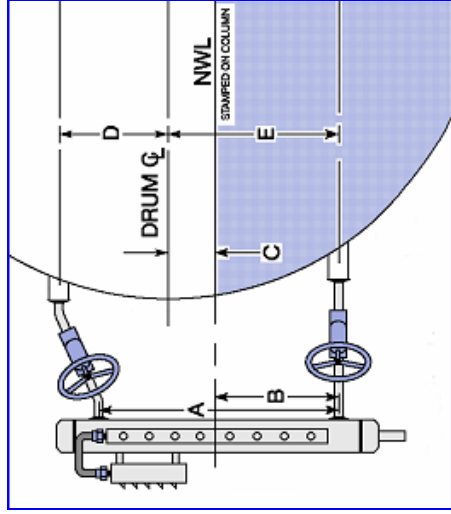
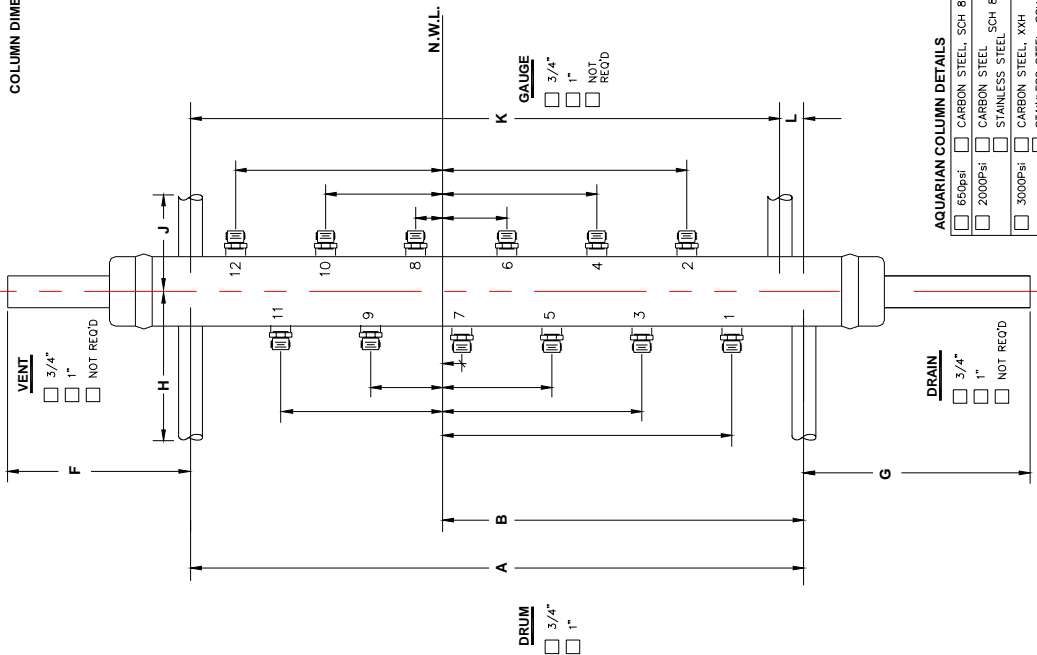
PLEASE INDICATE DRUM (H) & GAUGE (J)  
CONNECTION ORIENTATION.



**COLUMN DIMENSIONS :**

| DESCRIPTION                                     | CUSTOMER DIMENSIONS |
|---|---------------------|
| A COLUMN DRUM CONNECTION CENTERS                |                     |
| B COLUMN WATER CONNECTION TO NWL                |                     |
| C NWL TO DRUM CENTER LINE (CL)                  |                     |
| D DRUM CL TO STEAM CONNECTION                   |                     |
| E DRUM WATER CONNECTION TO DRUM CL              |                     |
| F CENTER OF STEAM CONNECTION TO END OF VENT     |                     |
| G CENTER OF WATER CONNECTION TO END OF DRAIN    |                     |
| H CENTER OF COLUMN TO END OF DRUM CONNECTION    |                     |
| J CENTER OF COLUMN TO END OF GAUGE CONNECTION   |                     |
| K COLUMN GAUGE CONNECTION CENTER                |                     |
| L CENTER OF WATER TO CENTER OF GAUGE CONNECTION |                     |

ABOVE FOR  
ORIENTATION



**NOTES:**

- PROBES MUST BE A MINIMUM OF 2" APART ON SAME SIDE OF COLUMN.
- PROBES MUST BE A MINIMUM OF 0.75" APART ON OPPOSITE SIDES OF COLUMN.
- LOWERMOST PROBE MUST BE A MINIMUM OF 1" BELOW STEAM DRUM CONNECTION
- UPPERMOST PROBE MUST BE A MINIMUM OF 1.5" ABOVE WATER DRUM CONNECTION
- TO BEAMS & ROBEW CONNECTED INSTEAD OF S&S CONNECTED. ENDS OF PIPE CAPS. (CONSULT FACTORY)
- STEAM PIPING MUST SLOPE 2% FROM DRUM TO COLUMN CONNECTION (ISOLATION VALVE (GLOBE TYPE) MUST BE INSTALLED WITH STEAM HORIZONTAL)
- FST WILL USE DISPLAY MARKINGS TO DENSITY ERROR CORRECT PROBE LOCATIONS.
- ALL DIMENSIONS ARE IN INCHES.
- CENTER OF COLUMN & JUNCTION BOX DEPTH = APPROXIMATELY 7".

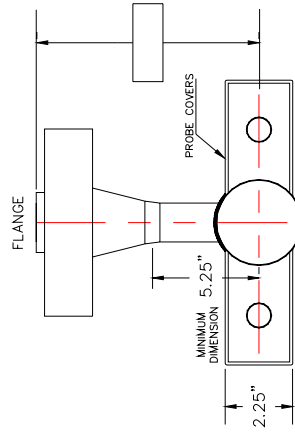
**DISPLAY MARKINGS:**

FOR SYSTEMS WITH 14-48  
PROBE LEVELS CONTACT FACTORY.

| PROBE LEVEL | DISPLAY MARKINGS |
|-------------|------------------|
| 12          |                  |
| 11          |                  |
| 10          |                  |
| 9           |                  |
| 8           |                  |
| 7           |                  |
| 6           |                  |
| 5           |                  |
| 4           |                  |
| 3           |                  |
| 2           |                  |
| 1           |                  |

**CONTRACT INFORMATION**

CUSTOMER: \_\_\_\_\_  
 LOCATION: \_\_\_\_\_  
 P.O. No.: \_\_\_\_\_ / SERIAL # \_\_\_\_\_  
 OPERATING PRESSURE: \_\_\_\_\_ TEMPERATURE: \_\_\_\_\_  
 DESIGN PRESSURE: \_\_\_\_\_ TEMPERATURE: \_\_\_\_\_



**OPTIONAL  
FLANGED DRUM CONNECTIONS**

- \_\_\_ SIZE ANSI CLASS \_\_\_\_\_  
 L MRF  L TRF  OTHER  
 NOT RECD



**FOSSIL STEAM  
TECHNOLOGIES INC.**

This drawing is the property of Fossil Steam Technologies, Inc. and is not to be reproduced or used to furnish any information for making of drawings or apparatus except where provided for by approval with said company.

TITLE :

**AQUARIAN 3000Mini WATER COLUMN**  
 5 - 12 PROBE LEVELS

DRAWING NO. : 3000M-912605

REVISION : 0